

SONA™

DESIGNED BY JORGE PENSI



Advanced performance meets acclaimed style— all in Sona, a chair that delivers innovative ergonomics and supreme all-day comfort.





OPEN LOOP ARM



Challenge the status quo with this distinctive task and conference chair, designed by Jorge Pensi.

Sona is functional and completely customizable, thanks to modern styling options (like a clever pull handle) and a variety of back styles, arm options and knit designs. You can always expand your creative choices with trusted fabric partners like Maharam, Momentum, DesignTex, Spinneybeck and Green Hides. Best yet, Sona is affordable, making it a smart choice for today's corporate, healthcare or education settings. Looks good and feels good— all day long.

Innovation. Style. Selection.™



shown in Black Textured Knit with
Messenger Capri by Maharam

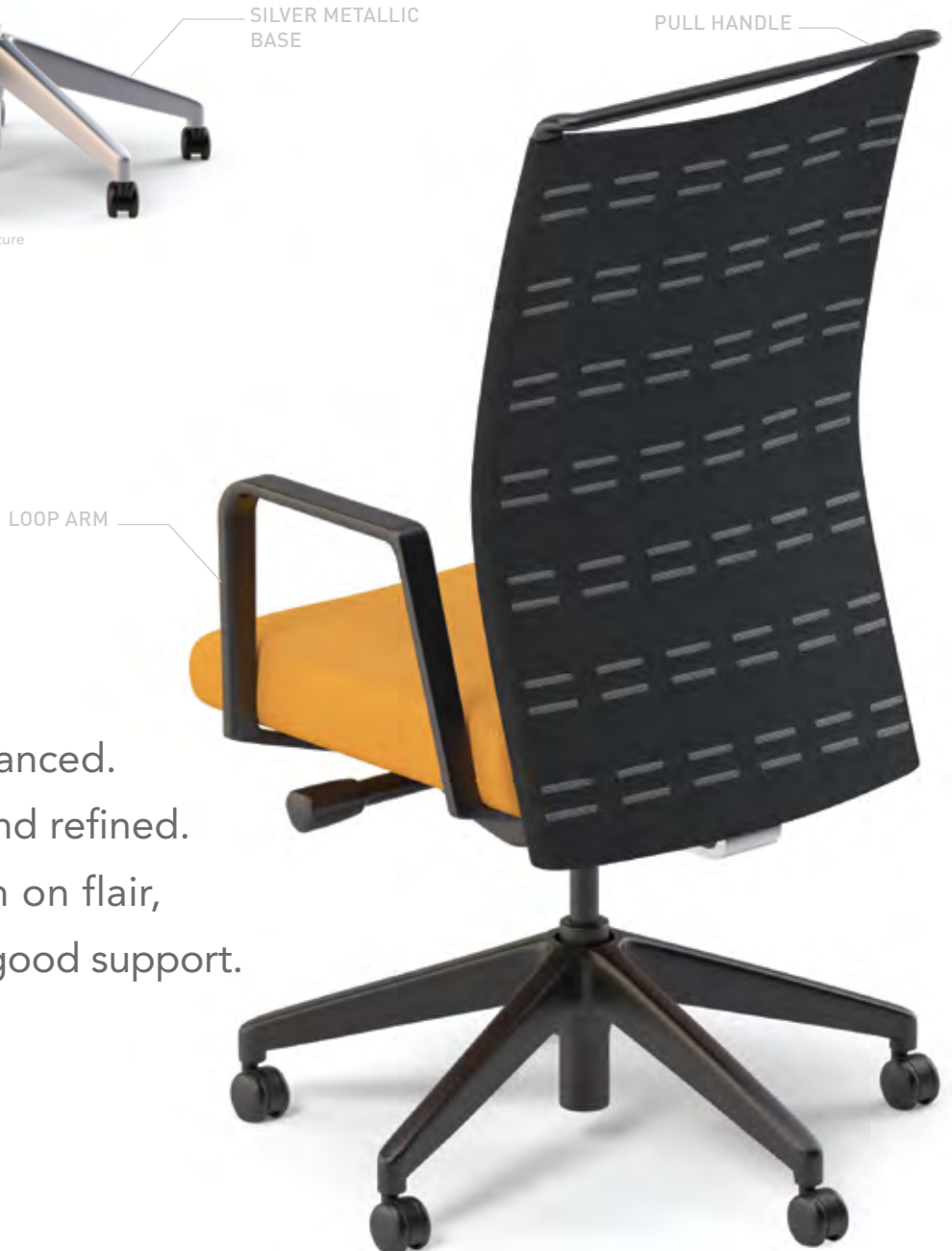


shown in Cool Grey Textured Knit with
Boom Mushroom by Momentum



shown in Messenger Azure
by Maharam

We Get Seating.
We Get You.™



shown in Shadow Twin Knit with
Messenger Tangelo by Maharam

Graceful and balanced.
Contemporary and refined.
Sona scores high on flair,
finesse and feel-good support.

Ergonomics / Comfort

Sona goes the distance with total comfort and flexible movement. Its generous back fits the spine's natural curvature for optimal back support, with an adjustable back height that provides lumbar support to fit everyone. The knit material provides a soft, comfortable feel. Choose from a variety of colors and designs to suit your space best.

Ergonomically, Sona is truly a work of art. It offers multiple arm styles— with both plastic and silver metallic finishes. The pivot arms— plus the ability to adjust the arm pad depth and width while you sit— creates the right ergonomic fit every time.

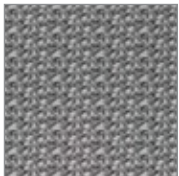
Three controls to personalize comfort: a Swivel Tilt, Knee Tilt and Enhanced Synchro. When you're ready to recline, the Enhanced Synchro smoothly moves your back and seat together for optimal motion and comfort. Seat slider, back tension and lock positions are all easy to adjust to fit each individual's needs. The waterfall seat relieves pressure from the back of the legs, allowing for healthy circulation.



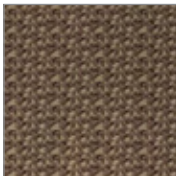
BLACK NYLON
BASE

shown in Mocha Textured Knit with
Messenger Hay by Maharam

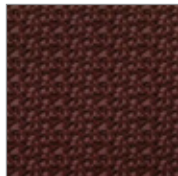
Textured Knit



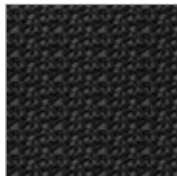
Cool Gray



Mocha



Merlot



Black



Ocean



Forest



Dune

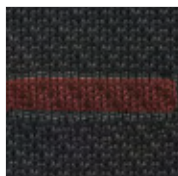
Twin Knit



Winter Gray



Toffee



Licorice



Shadow



Sustainability

You can rest assured that every product SitOnIt Seating makes is GREENGUARD and GREENGUARD Children and Schools certified, providing you with the confidence you need and the environmental stewardship you've come to expect. Made from readily available, recyclable materials.



Durability

Like all SitOnIt Seating products, the Sona series is built to last. Every component meets and exceeds ANSI-BIFMA standards. Further protecting your investment is SitOnIt Seating's standard lifetime warranty, which helps ensure complete satisfaction for years to come.

