

INFLEX™

DESIGNED BY GIANCARLO PIRETTI



Designed by Giancarlo Piretti,
the InFlex stacking chair gives new
meaning to the words "comfort zone".



Innovation. Style. Selection.™



shown in Slate

Enjoy the state-of-the-art InFlex chair with our patent-pending flex-back disc system. European styling. Body-perfect ergonomics.

You'll love its modern look, its innovative approach to comfortable back support, its generous scale and fit—compliments of Giancarlo Piretti. Choose from a variety of plastic colors and frame finishes. Or expand your creative choices with trusted fabric partners like Maharam, Momentum, DesignTex, Spinneybeck and Green Hides. It's made from readily available, fully recyclable materials—and it's the ideal chair for today's corporate, healthcare or education settings.



shown in Slate with
X-Factor Sangria by Momentum

It's flexibility redefined. Taking its cues from the human body, the InFlex provides natural back support, a full range of motion and unrestrained movement with just the right amount of tension.



shown in Navy

Ergonomics/ Comfort

When it comes to natural back support and a flex-back motion design, the InFlex stack chair is truly "ergonomics evolved." When a user reclines, the stacked disc system (inspired by the discs in your spinal column) and steel-spring rods respond immediately—working in unison, just like your own back, to offer personalized support for every body, every time. Each compression creates a natural tension that enables individualized back movement, with just the right amount of flex per user. Not too much. Not too little. It's the kind of comfort that you can depend on—hour after hour. It's the ergonomic design expertise of Giancarlo Piretti in action. It's an advanced design that lasts—so you can enjoy the comfortable benefits for years to come.



Sustainability

You can rest assured that every product SitOnIt Seating makes is GREENGUARD and GREENGUARD Children and Schools certified, providing you with the confidence you need and the environmental stewardship you've come to expect. Made from readily available, recyclable materials.



Durability

Like all SitOnIt Seating products, the InFlex series is built to last. Every component meets and exceeds ANSI-BIFMA standards. Further protecting your investment is SitOnIt Seating's standard lifetime warranty, which helps ensure complete satisfaction into the future.



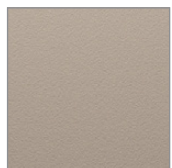
shown in Chocolate

**We Get Seating.
We Get You.™**

Finish Options

InFlex extends your creative options with its ability to mix or match frame and plastic colors. Whether you want to achieve a mono-chromatic look or a range of expressive combinations, InFlex has you covered.

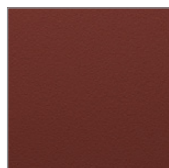
Plastic Colors



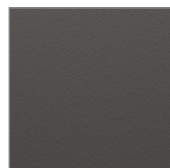
Bisque



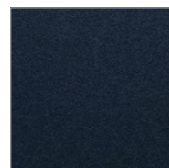
Chocolate*



Salsa*



Slate*

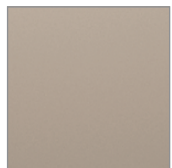


Navy*



Black

Frame Finish Colors



Bisque



Chocolate*



Salsa*



Slate*



Navy*



Black



Silver

*Available Spring 2011

