

#### *Pneumatic lift*

Easily adjusts to the perfect seat height. To raise the seat, lift your weight off the seat and pull up on the lever. Release lever when seat reaches desired height. To lower seat, lift up on the lever while you are seated; release lever when seat reaches desired height.

#### *Upright Position Tilt Lock*

Locks your chair in an upright position for full task support. Pull the paddle out to unlock and free float. Push the paddle in while the seat and back are upright to lock into position.

#### *Tension Control*

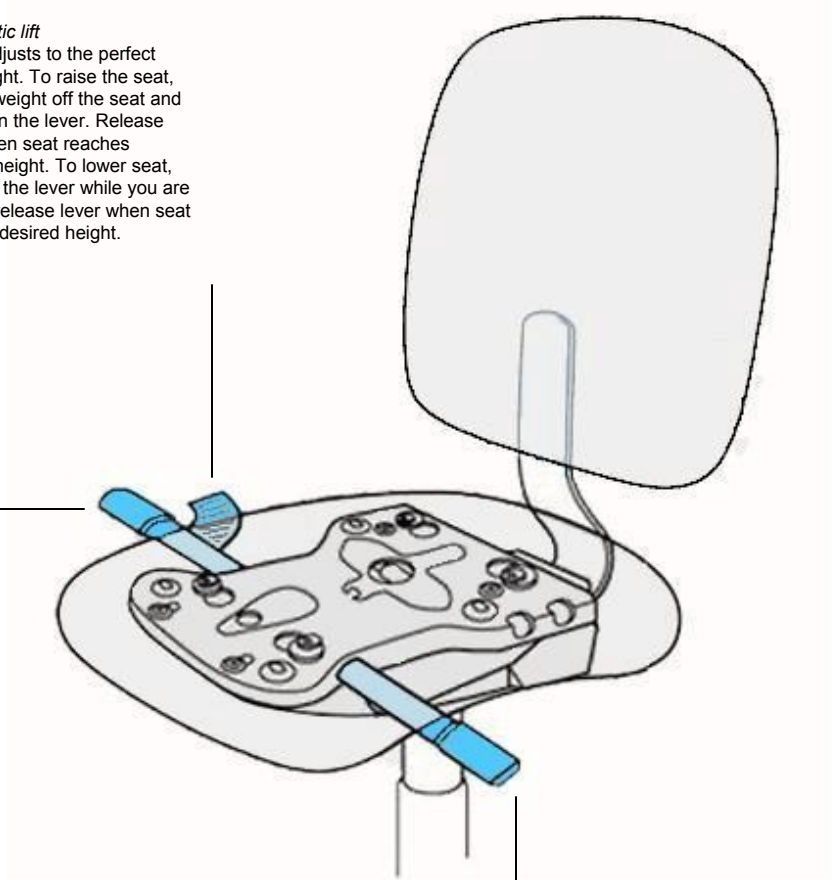
Provides a firmer or softer recline – multiple settings allow fingertip adjustment. Turn handwheel on the front of the mechanism; clockwise for more tension, counterclockwise for less tension.

### *Pneumatic lift*

Easily adjusts to the perfect seat height. To raise the seat, lift your weight off the seat and pull up on the lever. Release lever when seat reaches desired height. To lower seat, lift up on the lever while you are seated; release lever when seat reaches desired height.

### *Tension Control*

The Tension Control provides a firmer or softer recline – multiple settings allow fingertip adjustment. Pull out and turn handwheel on the front of the mechanism; clockwise for more tension, counterclockwise for less tension.



### *Tilt Control*

Easily locks and unlocks the Back Angle. Turn forward: unlock position  
Backward: 4-position locking